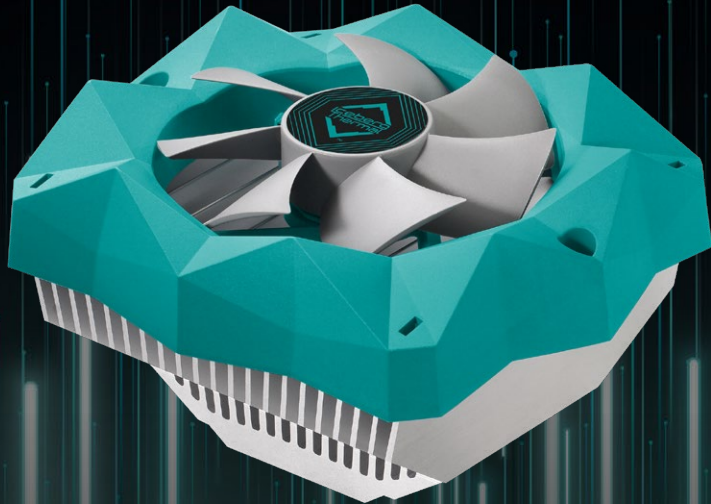




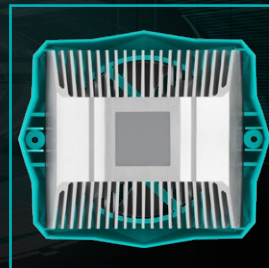
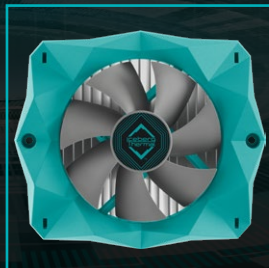
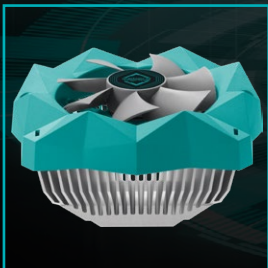
POWERFUL COMPACT DESIGN

IceFLOE® T95



Features a Powerful 92 mm PWM Fan

- Max TDP 95 W
- Compatible with both Intel & AMD
- Infinite RAM Clearance
- Hydraulic Bearing
- Pre-Applied FUZEIce® Thermal Compound



Specifications

General

Max. TDP	95 W
RAM Clearance	Infinite
Compatible Socket	Intel LGA 1200, 115X, 1366, 775 AMD AM5, AM4, AM3(+), AM2(+), FM2(+), FM1
Manufacturer Warranty	6-Year
Heatsink	Aluminum Extrusion
Thermal Compound	Pre-applied FUZEIce®
Dimensions	137 (L) x 120 (W) x 78.5 (H) mm
Weight	443 g

Fan

Speed	92 mm, 1000 – 2200 RPM
Voltage / Current	12V / 0.11 A
Airflow	41 CFM
Static Pressure	2.32 mm H ₂ O
Noise Level	32.3 dBA
Bearing	Hydraulic Bearing
Connector	4-pin PWM
MTTF	> 40,000 hours

Box Content

