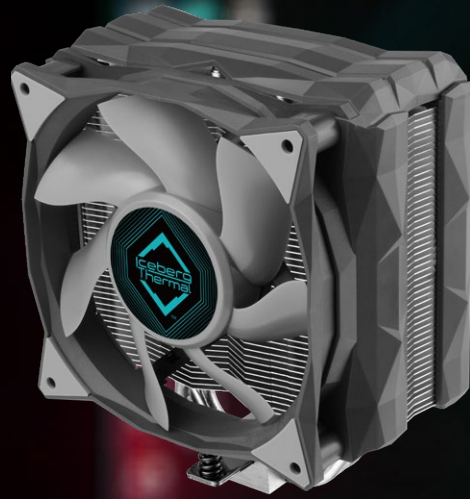




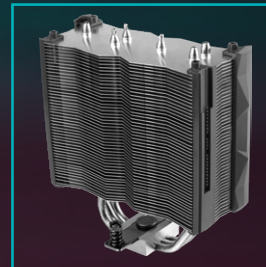
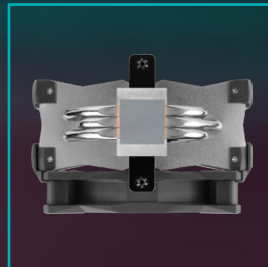
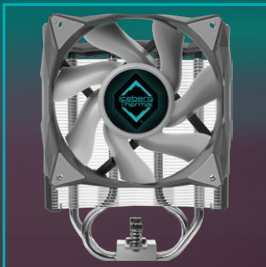
ULTIMATE PERFORMANCE COOLER

IceSLEET® G3



Fantastic 3 heatpipe CPU Cooler for Entry-Level PC builders and easy accessibility for all levels

- Max TDP of 160W
- Fan Slide-Lock Technology
- Authentic Fluid Dynamic Bearings
- Two-Plane Balance
- Brass Metal Housing
- Up to 20.5 dBA Noise Level
- 50 CFM Airflow
- Direct touch Nickel-Plated heatpipes
- Easy-Installation



Specifications

General

Max. TDP	160 W
RAM Clearance	35 - 56 mm
Heatpipe	Direct Touch Ø 6 mm x 3
Heatsink	Aluminum Fins x 48, 0.4 mm Thickness
Surface Finishing	Nickel-plated Heatpipes
Thermal Compound	Pre-applied FUZEIce®
Dimensions	81 (L) x 139 (W) x 156 (H) mm
Weight	680 g
Socket Support	Intel LGA 1700, 1200, 115X, 1366, 775 AMD AM5, AM4, AM3(+), AM2(+), FM2(+), FM1
Manufacturer Warranty	6-Year

Fan

Size	120 x 120 x 25 mm, IceGALE® 120 series
Speed	600 – 1200 RPM
Airflow	50 CFM
Static Pressure	1.1 mm H ₂ O
Voltage / Current	12 V / 0.1 A
Bearing	Fluid Dynamic Bearing
Noise Level	20.5 dBA
Connector	4-pin PWM
MTTF	> 150,000 hours

Box Content

