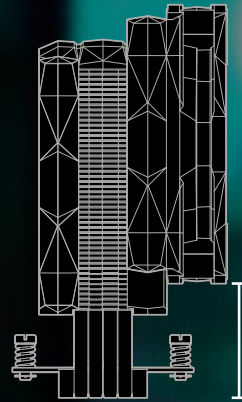




ULTIMATE PERFORMANCE COOLER

IceSLEET® G40C

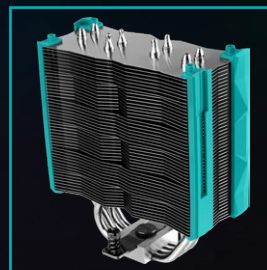
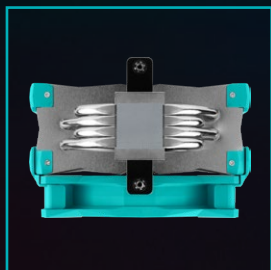
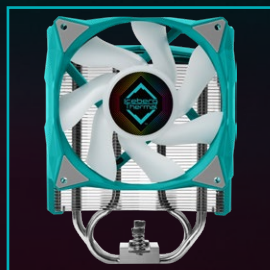


35 - 56 mm
RAM Clearance



Compelling and affordable, this 4 heatpipe CPU Cooler is designed so you can take gaming to the next level

- Max TDP of 180W
- Fan Slide-Lock Technology
- Authentic Fluid Dynamic Bearings
- Two-Plane Balance
- Brass Metal Housing
- Up to 22.5 dBA Noise Level
- 58.5 CFM Airflow
- Direct touch Nickel-Plated heatpipes and fins
- Vivid ARGB PWM Fan
- Two color options to choose from
- Easy-Installation



Specifications

General

Max. TDP	180 W
RAM Clearance	35 - 56 mm
Heatpipe	Direct Touch Ø 6 mm x 4
Heatsink	Aluminum Fins x 48, 0.4 mm Thickness
Surface Finishing	Nickel-plated
Thermal Compound	Pre-applied FUZEIce®
Dimensions	81 (L) x 139 (W) x 156 (H) mm
Weight	733 g
Socket Support	Intel LGA 1700, 1200, 115X, 1366, 775 AMD AM5, AM4, AM3(+), AM2(+), FM2(+), FM1
Manufacturer Warranty	2-Year

Lighting

Type	Addressable RGB
Connector	3-pin ARGB with Daisy Chain Connector
Voltage / Current	5 V / 0.6 A

Fan

Size	120 x 120 x 25 mm, IceGALE® 120 series
Speed	600 - 1400 RPM
Airflow	58.5 CFM
Static Pressure	1.5 mm H ₂ O
Voltage / Current	12 V / 0.11 A
Bearing	Fluid Dynamic Bearing
Noise Level	22.5 dBA
Connector	4-pin PWM
MTTF	> 150,000 hours

Box Content

