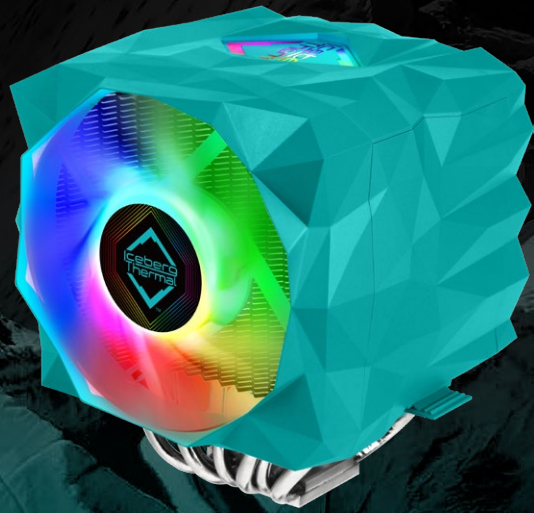




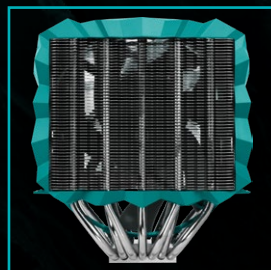
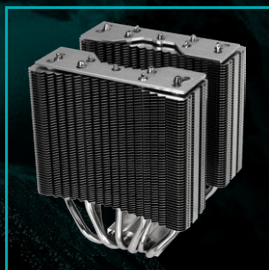
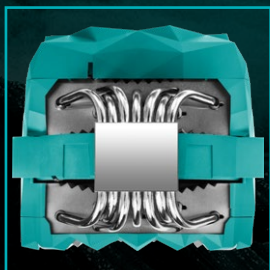
ULTIMATE PERFORMANCE COOLER

IceSLEET® X7 Dual



Dual Tower Cooler Featuring a 120 mm PWM Fan & 140 mm PWM Fan

- 7 Tuned Copper Heat Pipes
- Compatible with Intel/AMD
- Vivid ARGB Lighting
- Auto START and STOP Feature:
The Fan is Silent, Until Duty Cycle Reaches 21% Loading
- Complete Bond Soldering Between Fin Sheets
- Copper Base Fully Covers the Chipset
- Nickel Plate Finishing



Specifications

General

Max TDP	225 W
RAM Clearance	45 mm
Heatpipe	Ø 6 mm x 7
Heatsink	Aluminum Fins x 98, Thickness 0.4 mm, Copper Base
Surface Finishing	Nickel-plated
Thermal Compound	FUZEIce® Plus (0.8 g)
Dimensions	135 (L) x 150 (W) x 166 (H) mm
Weight	1,158 g
Socket Support	Intel LGA 1700, 1200, 2066, 115X, 2011-0, 2011-3 (Square ILM), 1366, 775 AMD AM5, AM4, AM3(+), AM2(+), FM2(+), FM1
Manufacturer Warranty	2-Year

Lighting

Type	Addressable RGB
Connector	3-pin Addressable RGB Connector
Voltage / Current	5 V / 0.5 A

Fan

Size	120 mm x 1 / 140 mm x 1
Speed	500 - 1850 RPM / 500 - 1600 RPM
Airflow	76 CFM / 96 CFM
Static Pressure	2.8 mm H ₂ O / 2.65 mm H ₂ O
Voltage	12 V
Current	0.2 A / 0.23 A
Bearing	Fluid Dynamic Bearing
Noise Level	0 - 38 dBA (with Auto START/STOP)
Connector	4-pin PWM x 2
MTTF	> 150,000 hours

Box Content

